

**TISHK INTERNATIONAL UNIVERSITY  
FACULTY OF ENGINEERING  
CIVIL ENGINEERING DEPARTMENT**



# **Architecture For Civil Engineering**

**TOPIC: Lecture 5**

**Wall Bearing System ( Elevations)**

**3rd Grade- Fall Semester 2020**

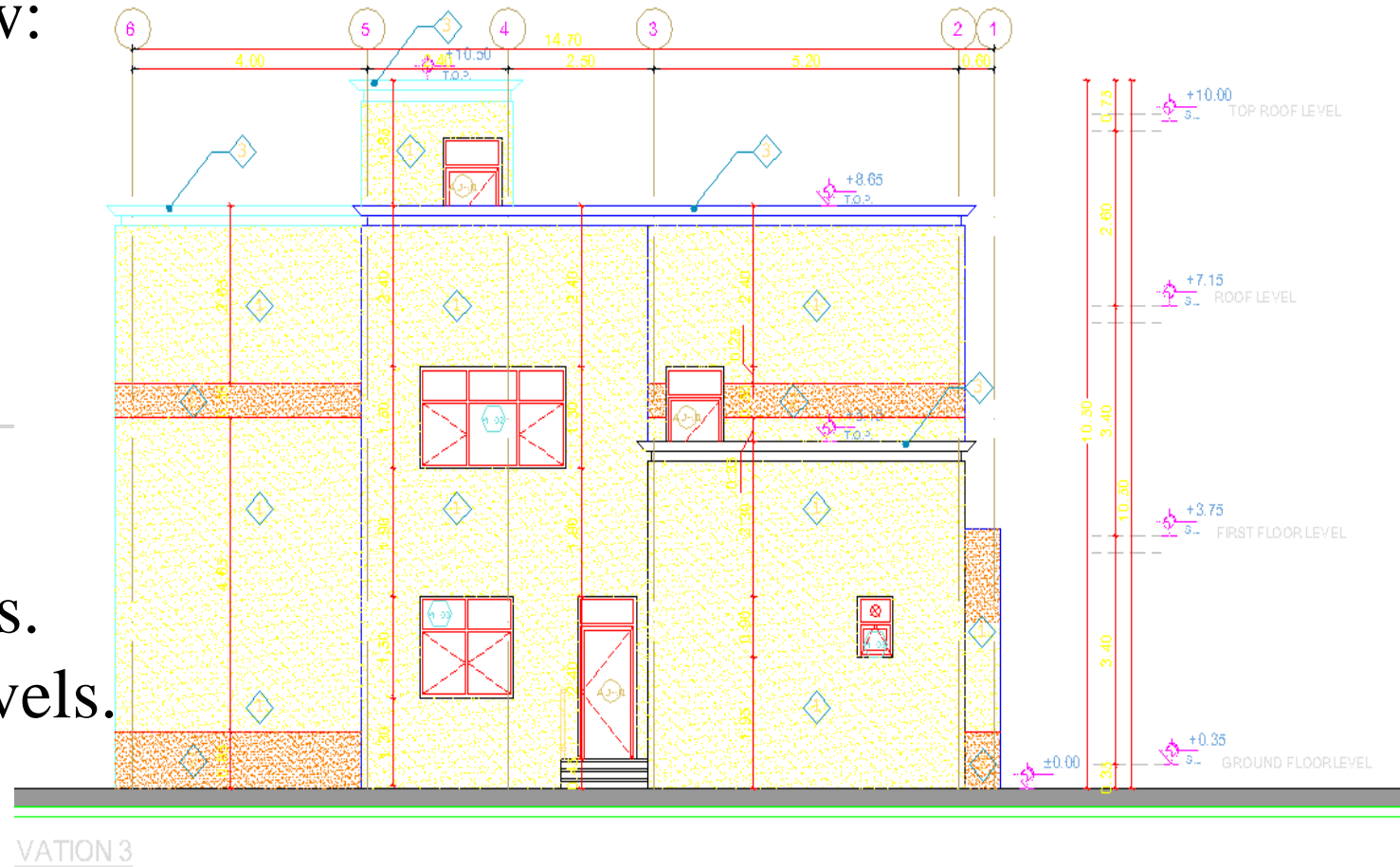
**Instructor: Muhammad Rojnamachy**

# -Elevations

- The Elevations are scaled drawings which show all four sides of the building with all perspective flattened.
- These are used to give the builder an overview of how the finished building will look and the types of exterior finishing materials.



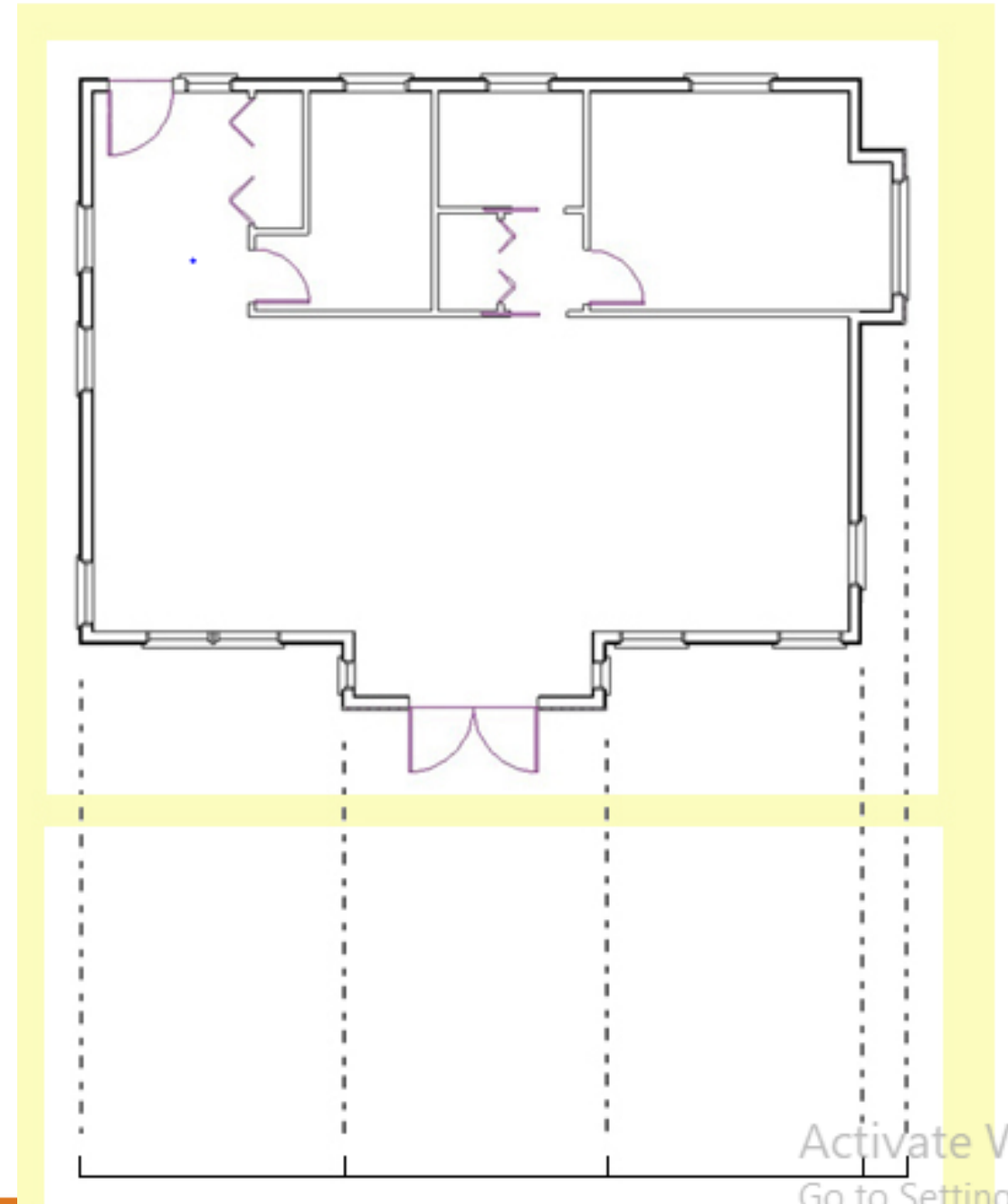
- For each side of the building elevation drawings should show:
- Each wall length and its height,
- The roof width and height,
- The visible portion of the foundation,
- Any exterior features (such as decks, and stairs),
- Windows and Doors & their tags.
- The finished ground level & Levels.
- Proposed finishing materials & their tags (1,2,.....)
- Main & Sub Dimensions.( **Vertical Only**)
- Axis & Center Lines



# Steps of Drawing an Elevation

## 1. Drawing Main Floor Wall Baseline

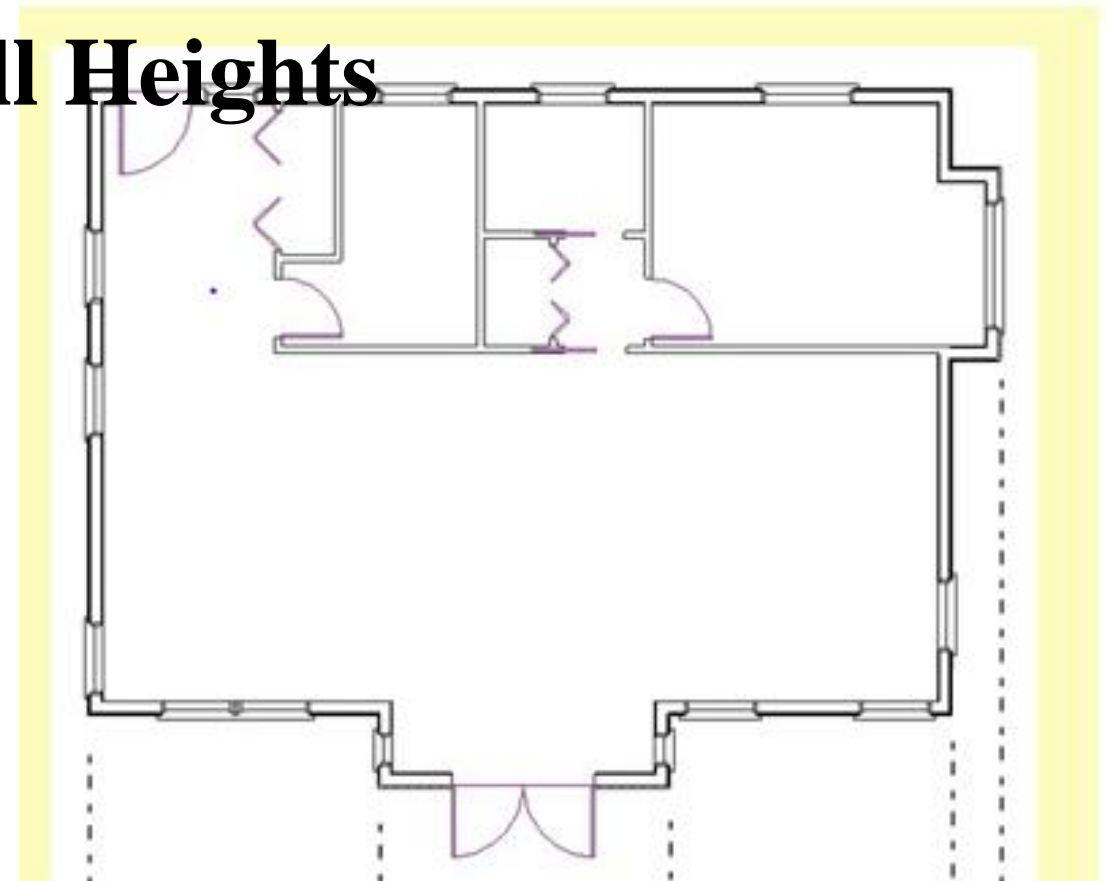
- Using your floor plan drawings and starting at the extreme left end of any walls on this side of the building on the ground floor, measure the horizontal distance of this wall.
- If there is another exterior wall at the same elevation to the right of this wall
- Continue marking walls in this way until you reach the end of walls on this side of the building



Activate W  
Go to Setting

## 2. Determining and Drawing Wall Heights

- Determine how high the wall will be above its unfinished floor height.
- Draw faint/hidden vertical lines up from each of the wall base lines to the height you have determined in the previous step.
- Continue repeating the previous steps until you have no floors above the current level. Then move on to the next section, Draw Window and Door Outlines.

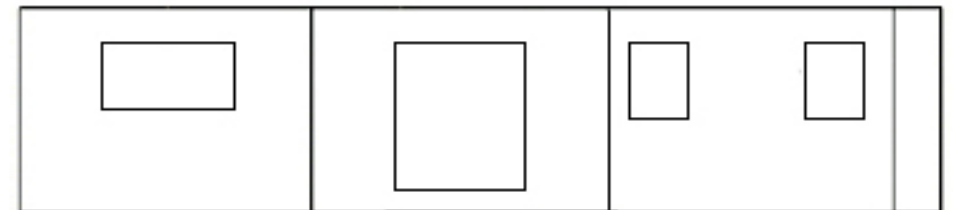
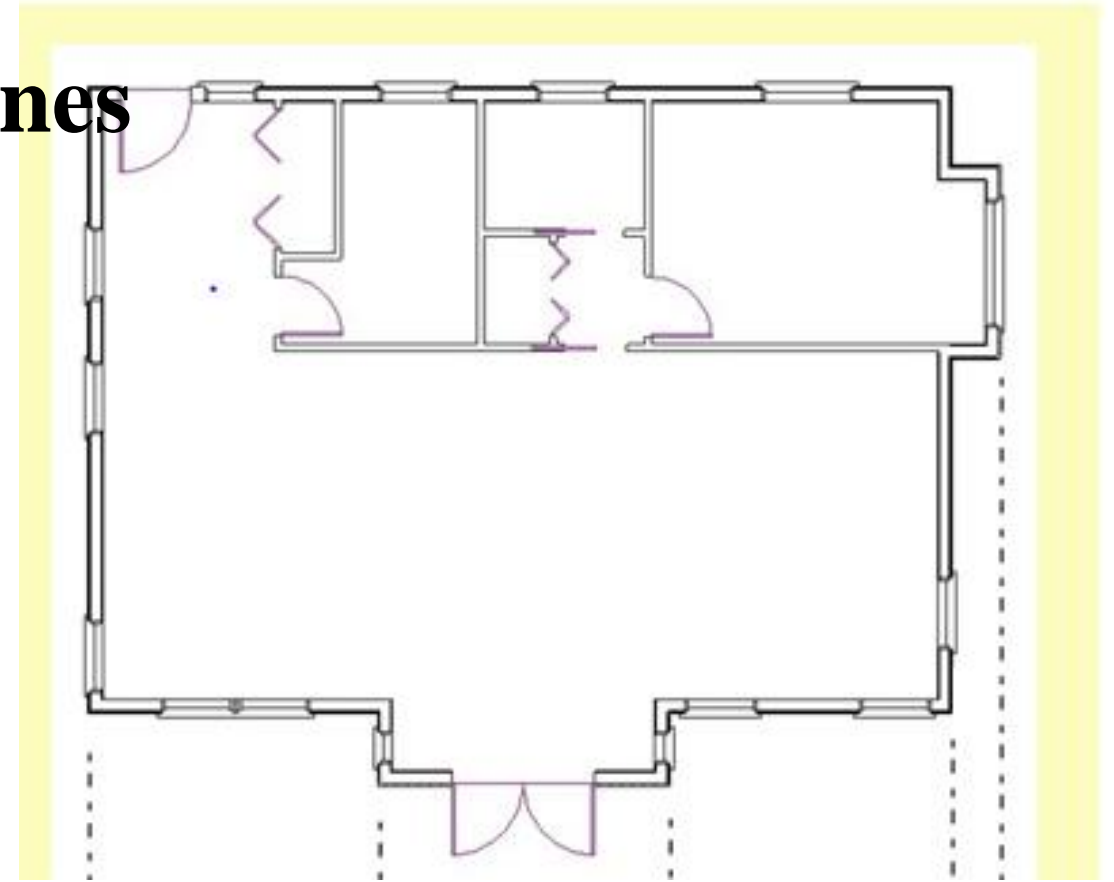




### 3- Draw Window and Door Outlines

For all of your windows and doors, measure from the horizontal lines of your floors to position the exterior doors and windows.

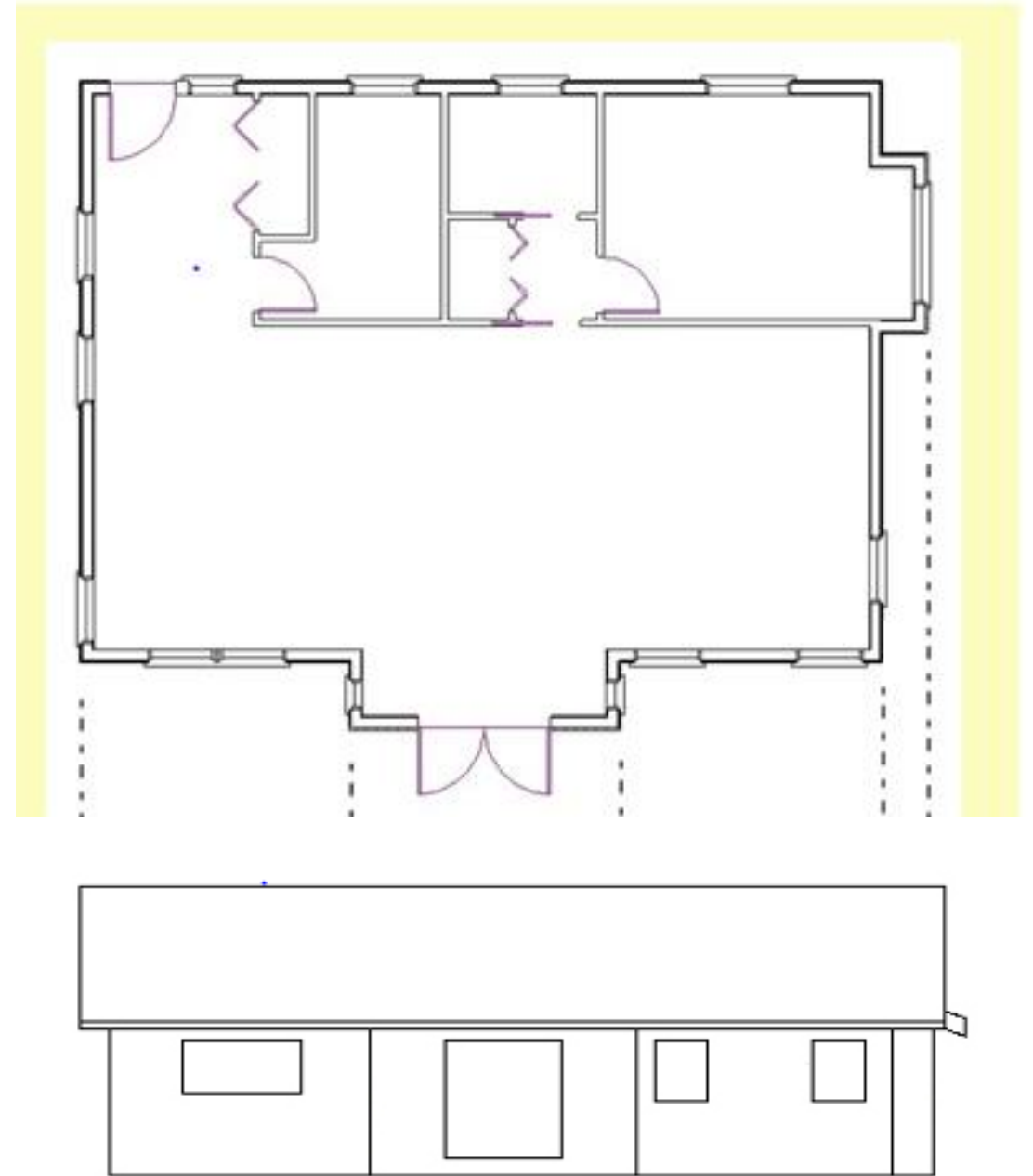
- Your construction drawings, usually the cross-sections, will detail the height at which each window should be placed.



## 4- Drawing the Roof

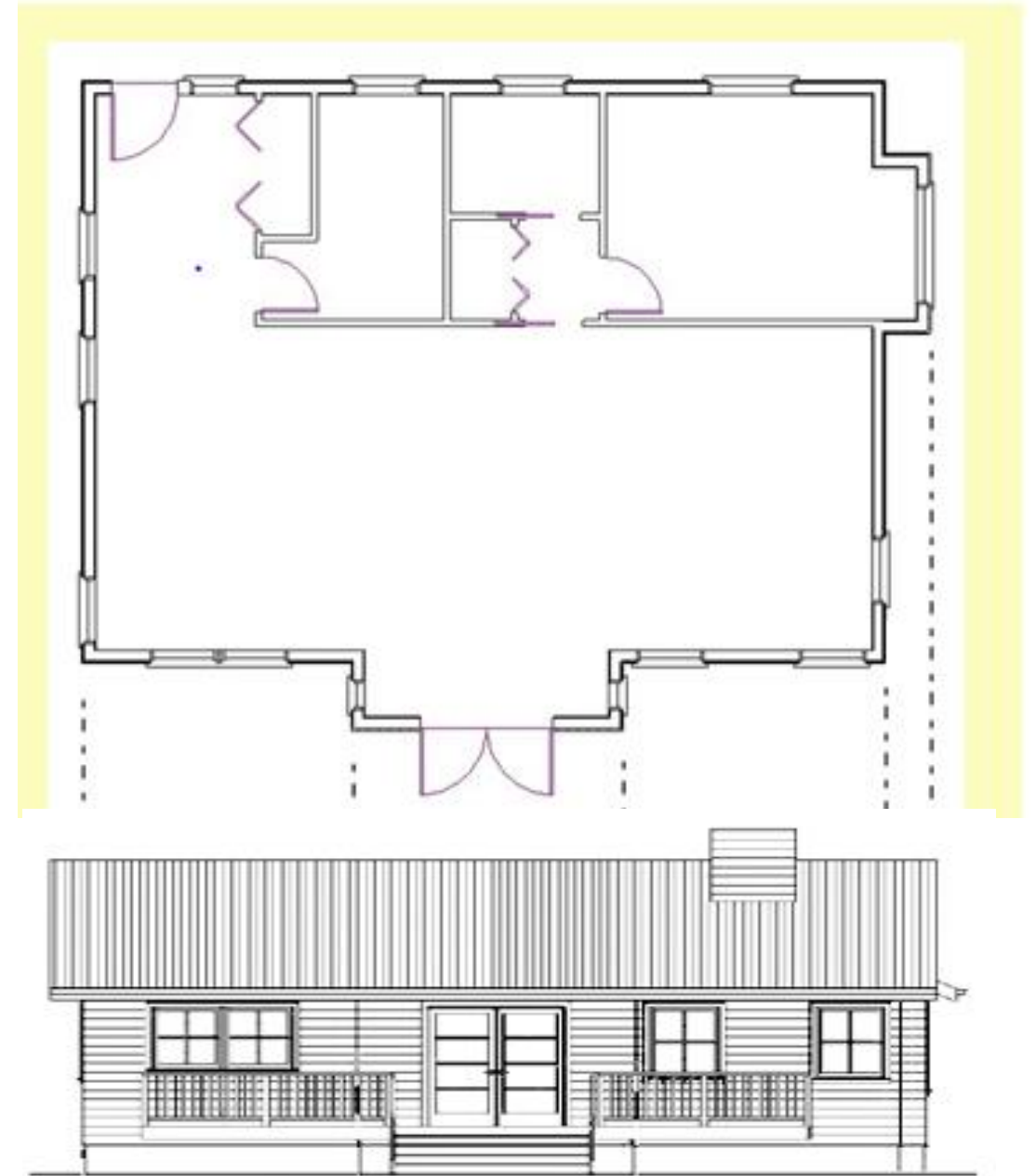
- The roof lines can be of many styles: straight , slopped , etc.

To draw the roof for each elevation view, first consider whether your roof will overhang and drop below the exterior wall on the elevation plan you are currently drafting.



## 5- Draw Exterior Finishing & Details

- If you will have wood or another type of siding (horizontal, vertical ) draw these lines to indicate the finish. For a stucco wall you need not draw any surface.
- For a brick or stone wall, the finish should be drawn.
- Draw in any further details, their railings and stairways.



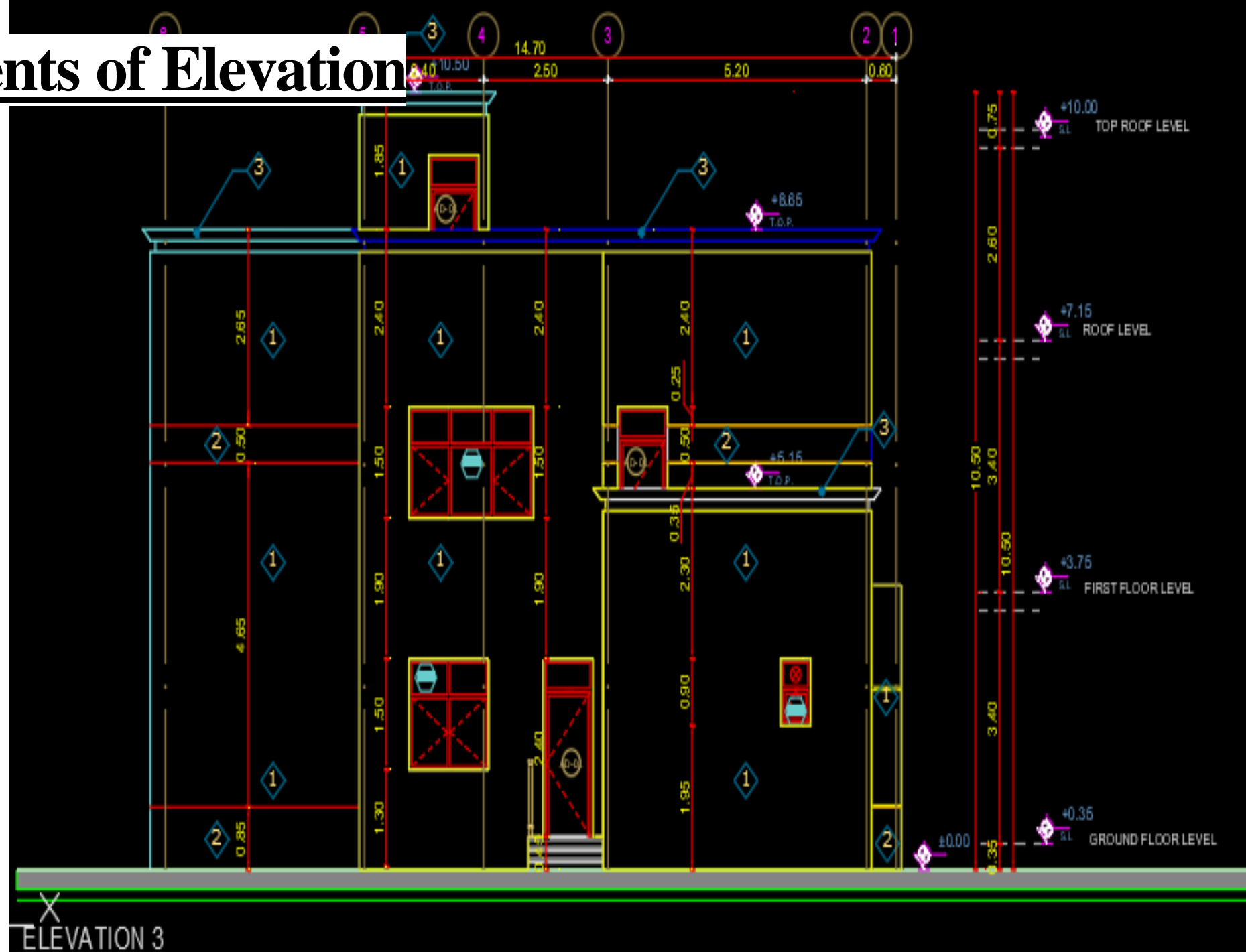


# 1-Drawing Elements of Elevation

1- Main Masonry  
(Walls, Partitions...)

2- The Openings  
(Doors, Windows....)

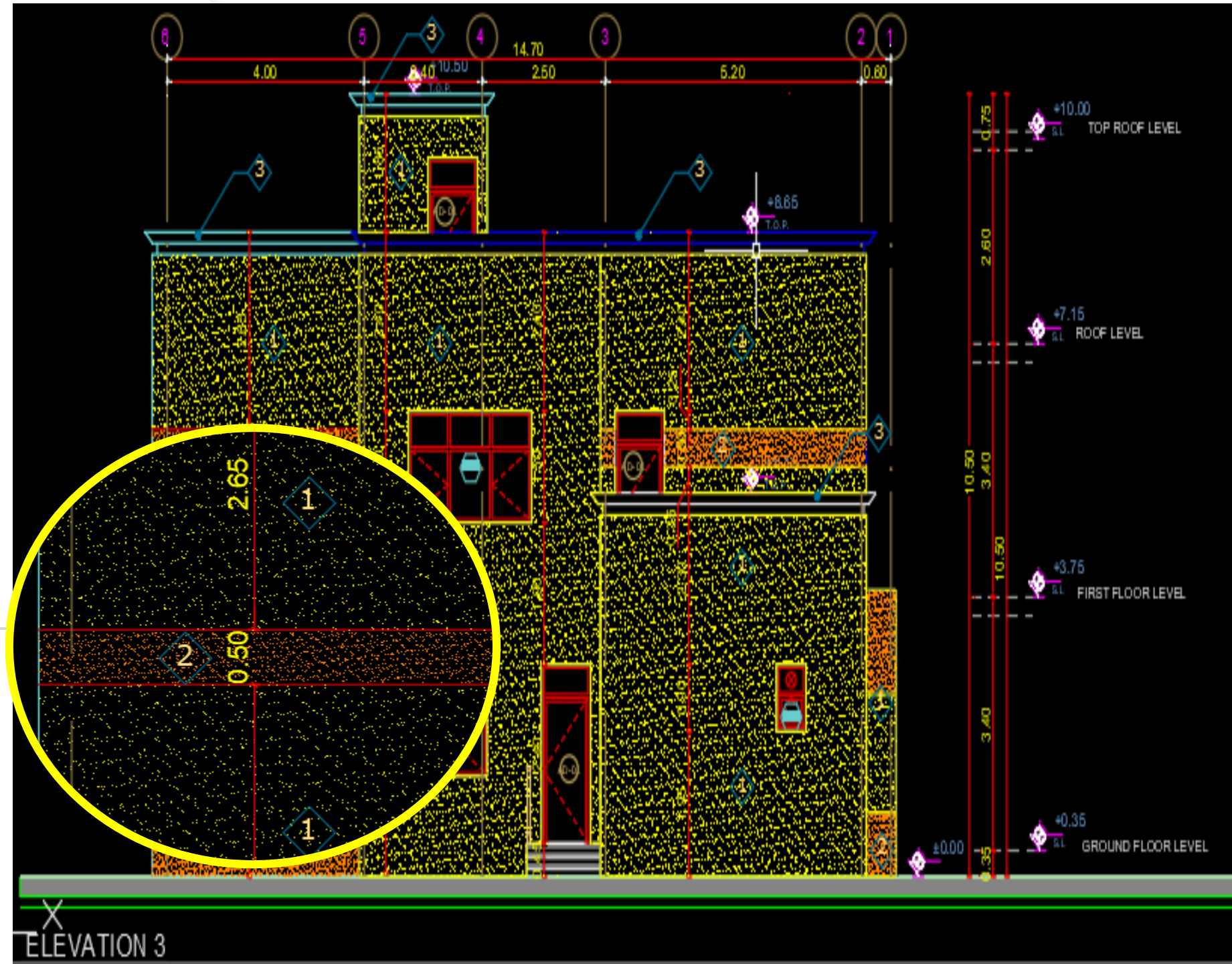
3- Figures & Lines  
( Levels, Elevations,  
Steps.....)



## 4- Axes (Grid) Lines

## 5- Dimensions ( Different Categories)

## 6- Hatches (Different Materials)

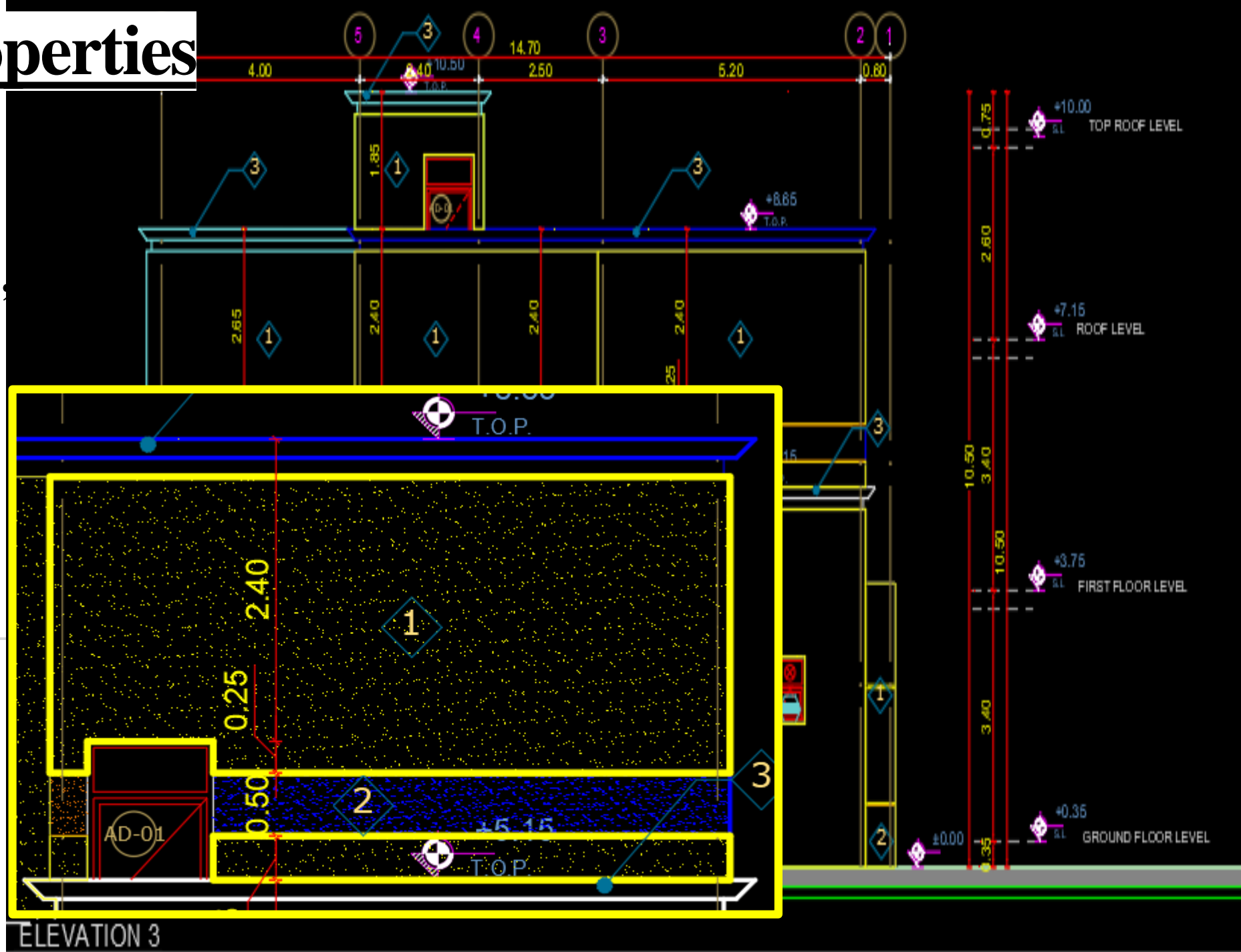


# 2- Drawing Properties

1- Line Type  
( Continuous, Dashed )

2- Line Color  
( Blue, Red, Green,.... )

3- Line Weight  
0.00,0.05, 0.09.....



The background features a large, faint watermark of the Tishk International University logo. The logo is circular with a sunburst border. Inside the circle, the text "TISHK INTERNATIONAL UNIVERSITY" is written along the top arc, and "SULAIMANI" and "2014" are written along the bottom arc. In the center of the circle, the letters "TIU" are prominently displayed. Below the circle, there is a stylized graphic of an open book with a fountain pen resting on it.

Thank you