

**TISHK INTERNATIONAL UNIVERSITY
FACULTY OF ENGINEERING
CIVIL ENGINEERING DEPARTMENT**



Architecture For Civil Engineering

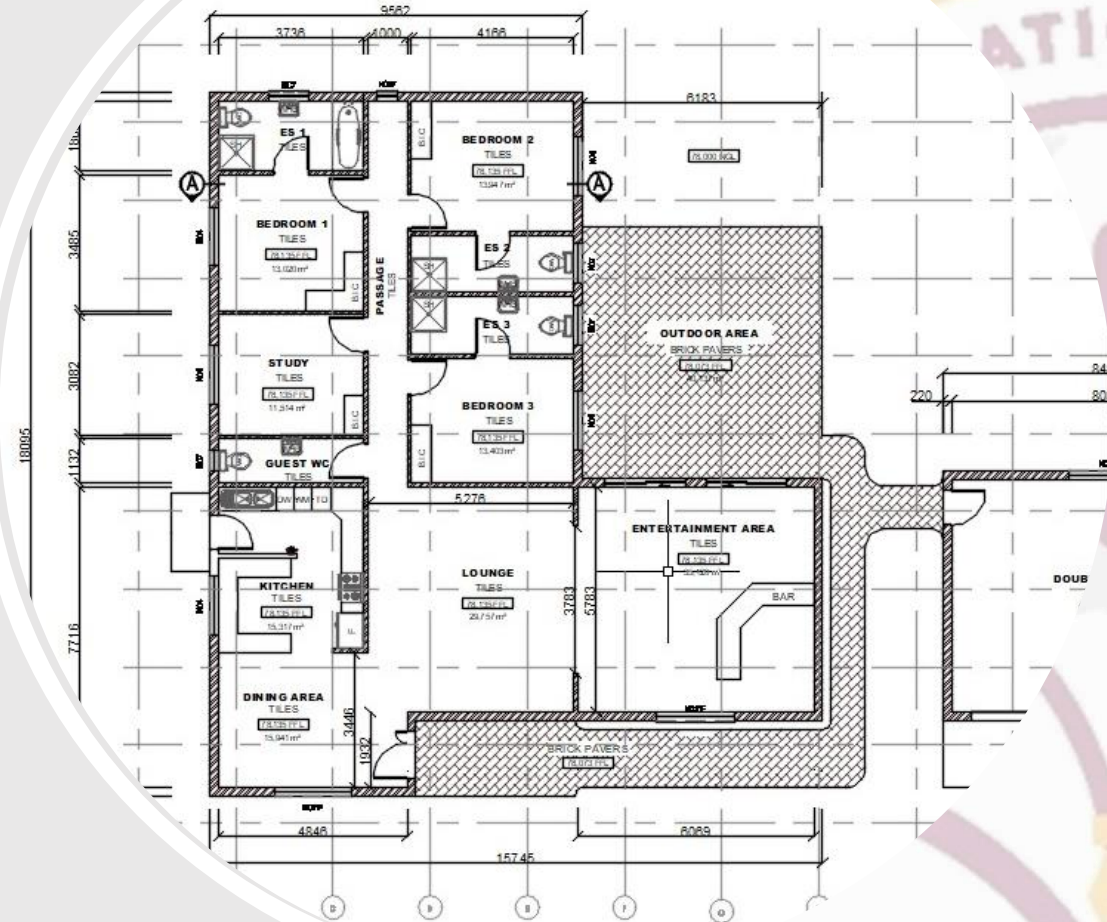
TOPIC: Lecture 2

Wall Bearing System (Plans)

3rd Grade- Fall Semester 2020

Instructor: Muhammad Rojnamachy

Wall Bearing System Plans



1-Wall Bearing System

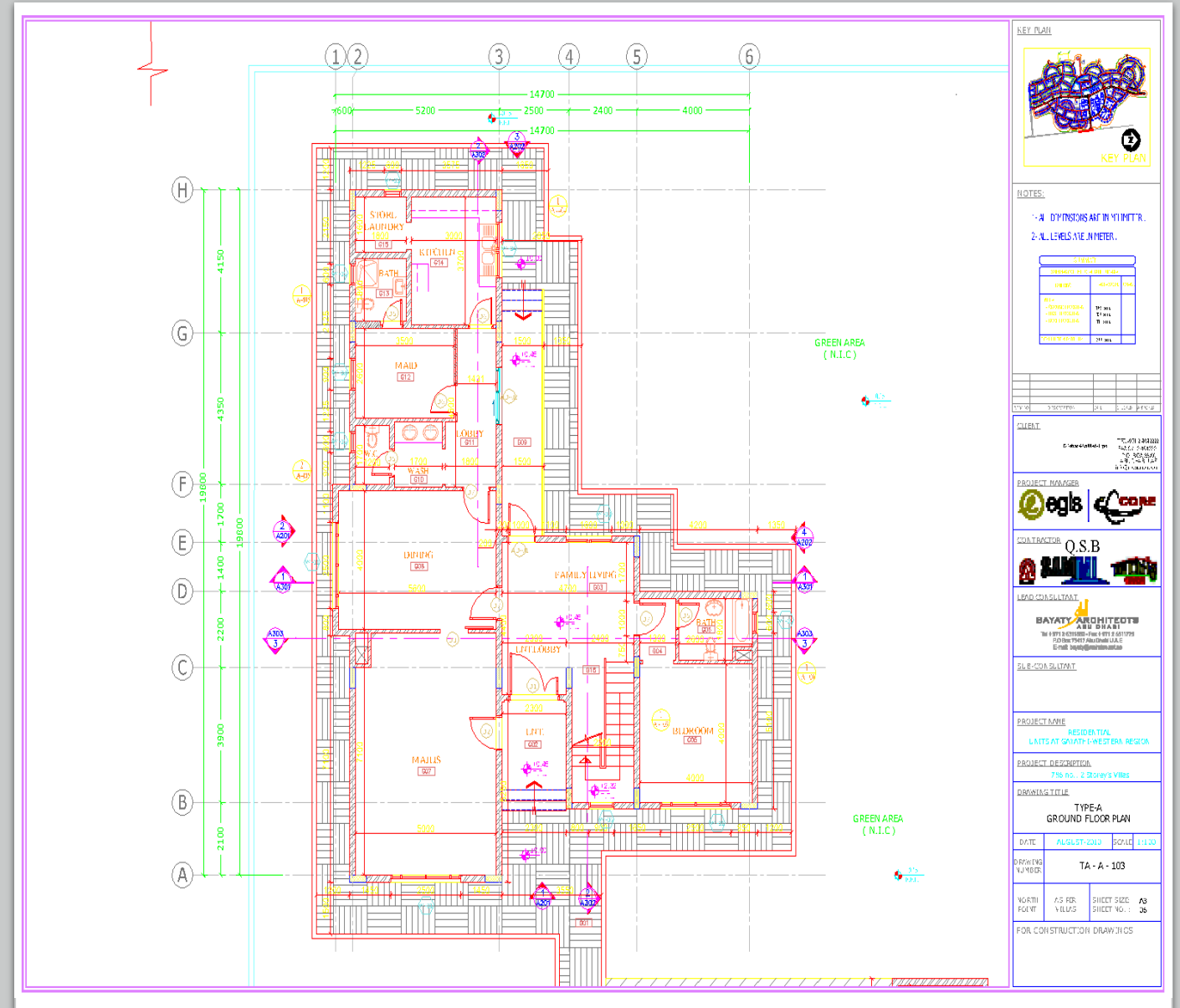
- This type of **system** uses **walls** to carry the vertical and lateral loads of the structure down to its foundation.

- Materials used for this **system** include but not limited to wood, concrete, and brick



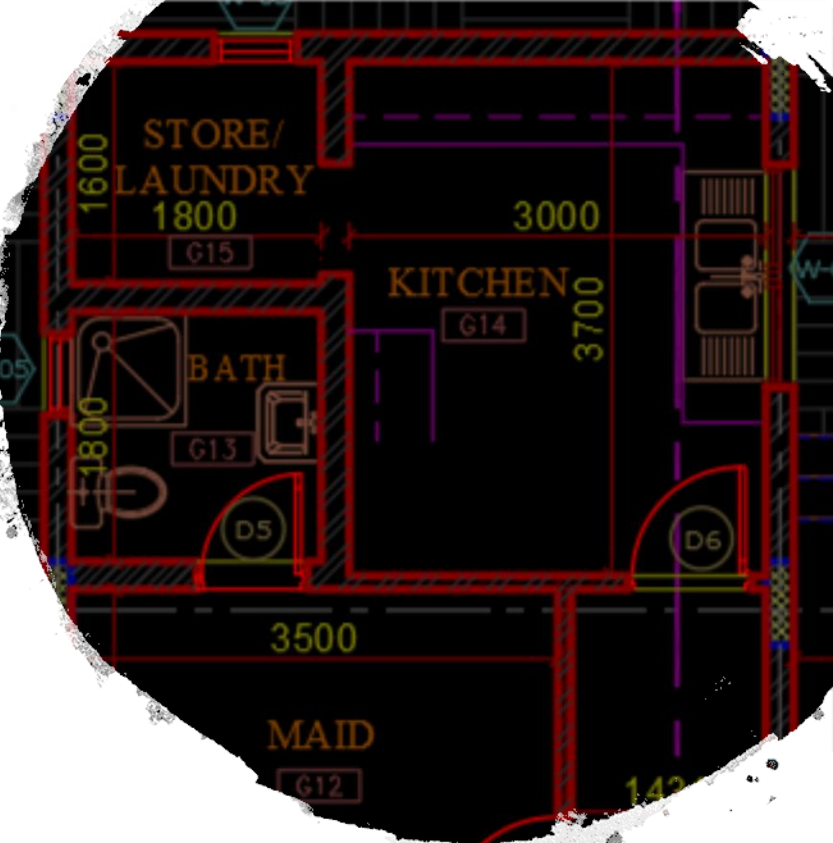
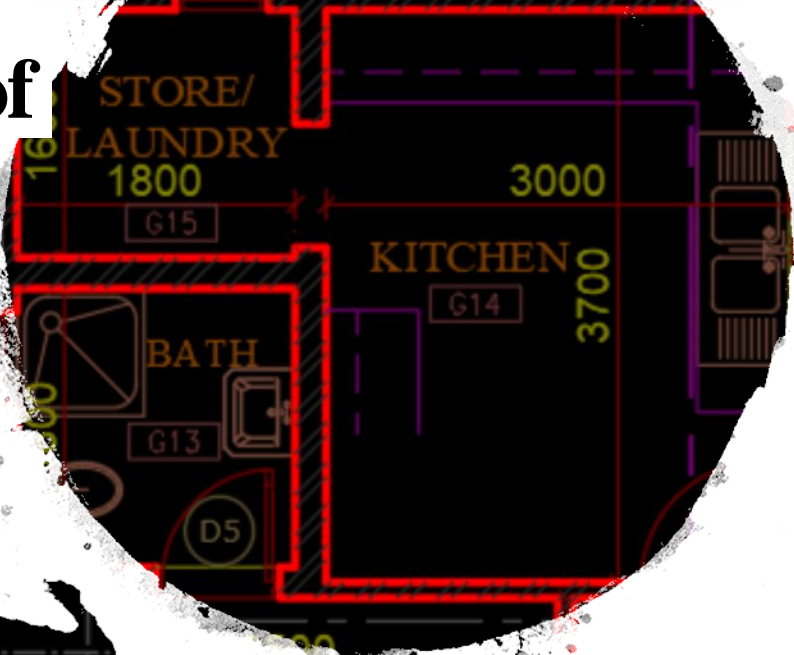
- Plans

- In **architecture** and building engineering, a **floor plan** is a Horizontal Section as drawing to scale.
- Showing a view from above, of the relationships between rooms, spaces, circulation, and other physical features at one level of a structure.
- Dimensions are usually drawn between the walls to specify room sizes and wall lengths

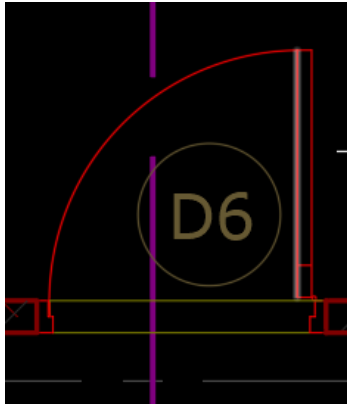


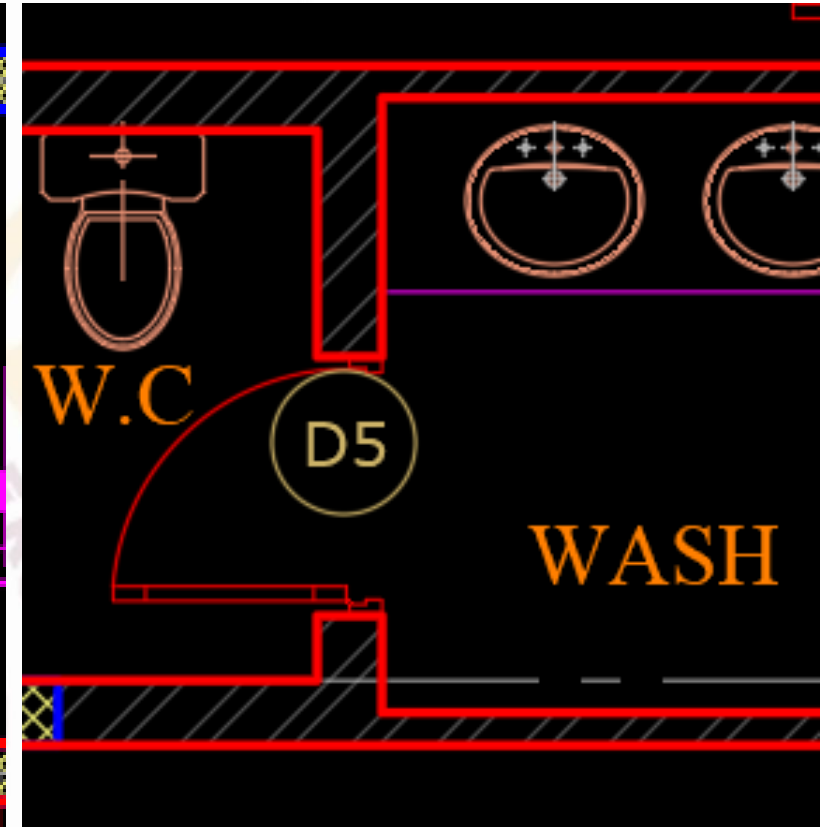
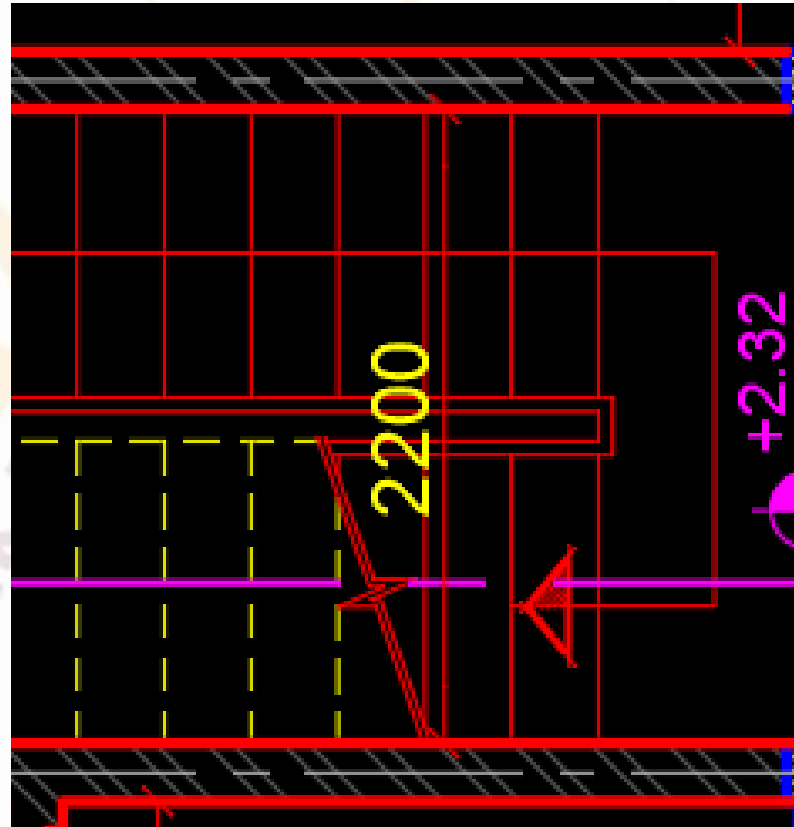
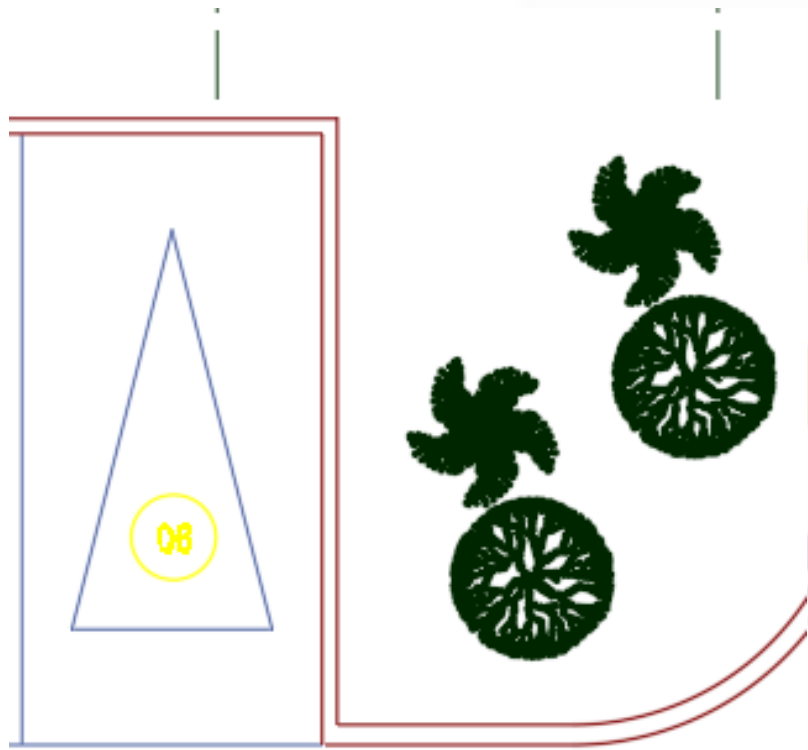
1-Drawing Elements of Plan

1- Main Masonry (Walls)



2- The Openings (Doors , Windows)



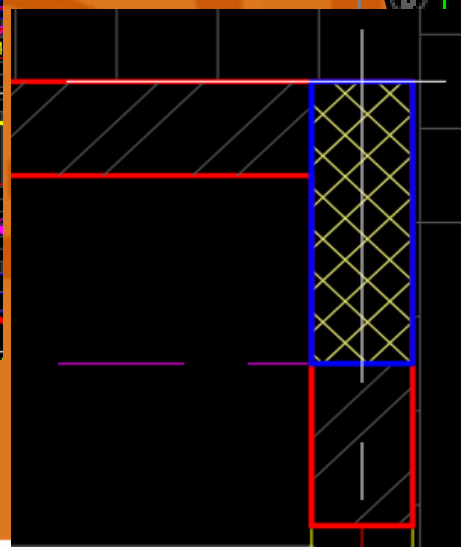
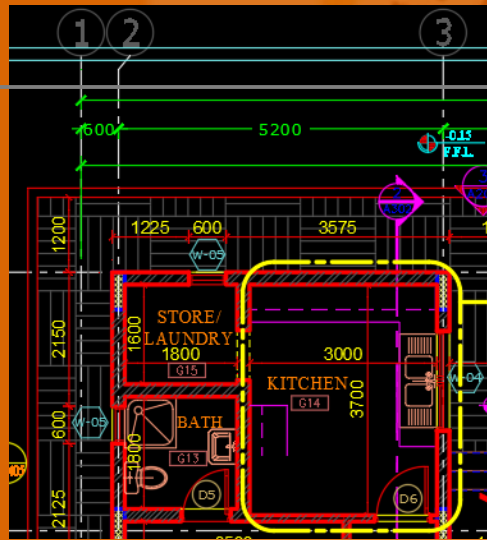
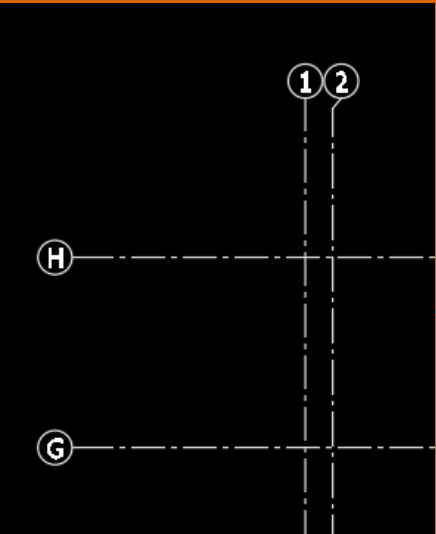


3-Fixtures, Figures & Lines (Hidden ,Elevations, Steps, Landscape Elements) ...

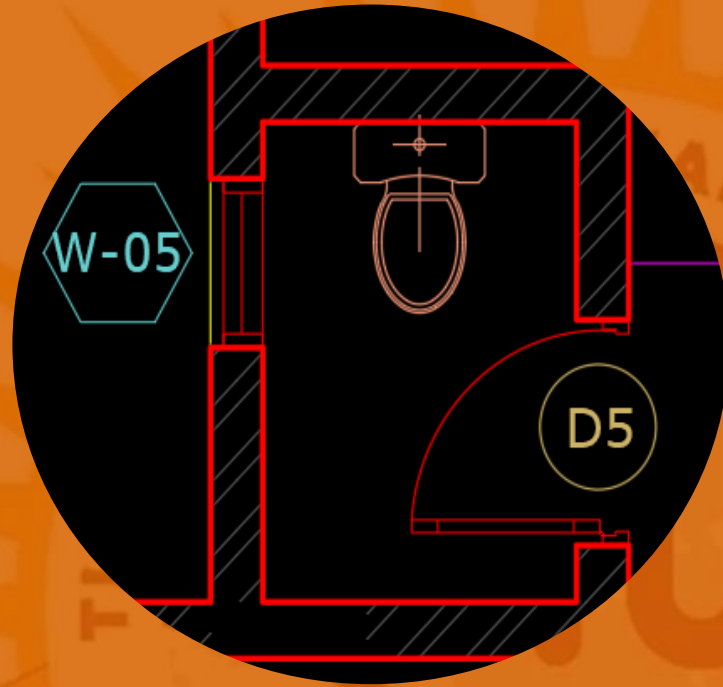
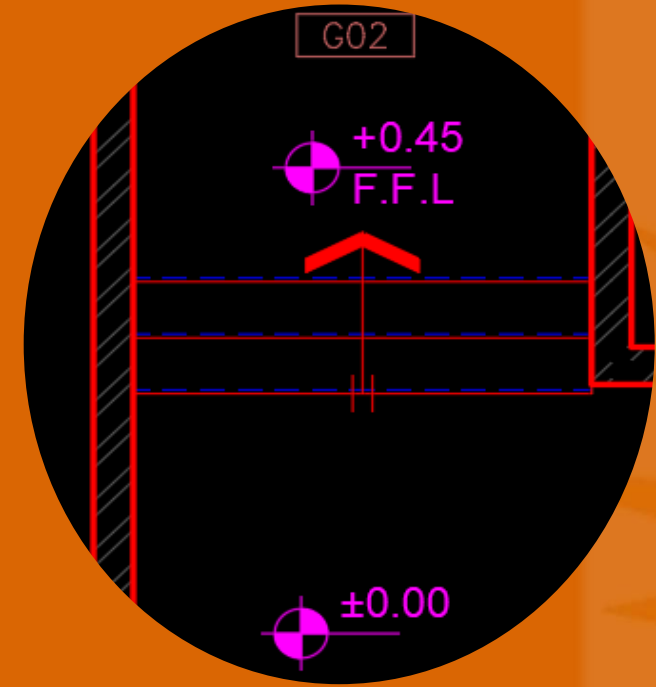
4- Axes (Grid) Lines

5- Dimensions (Different categories)

6- Hatches (Different Styles)



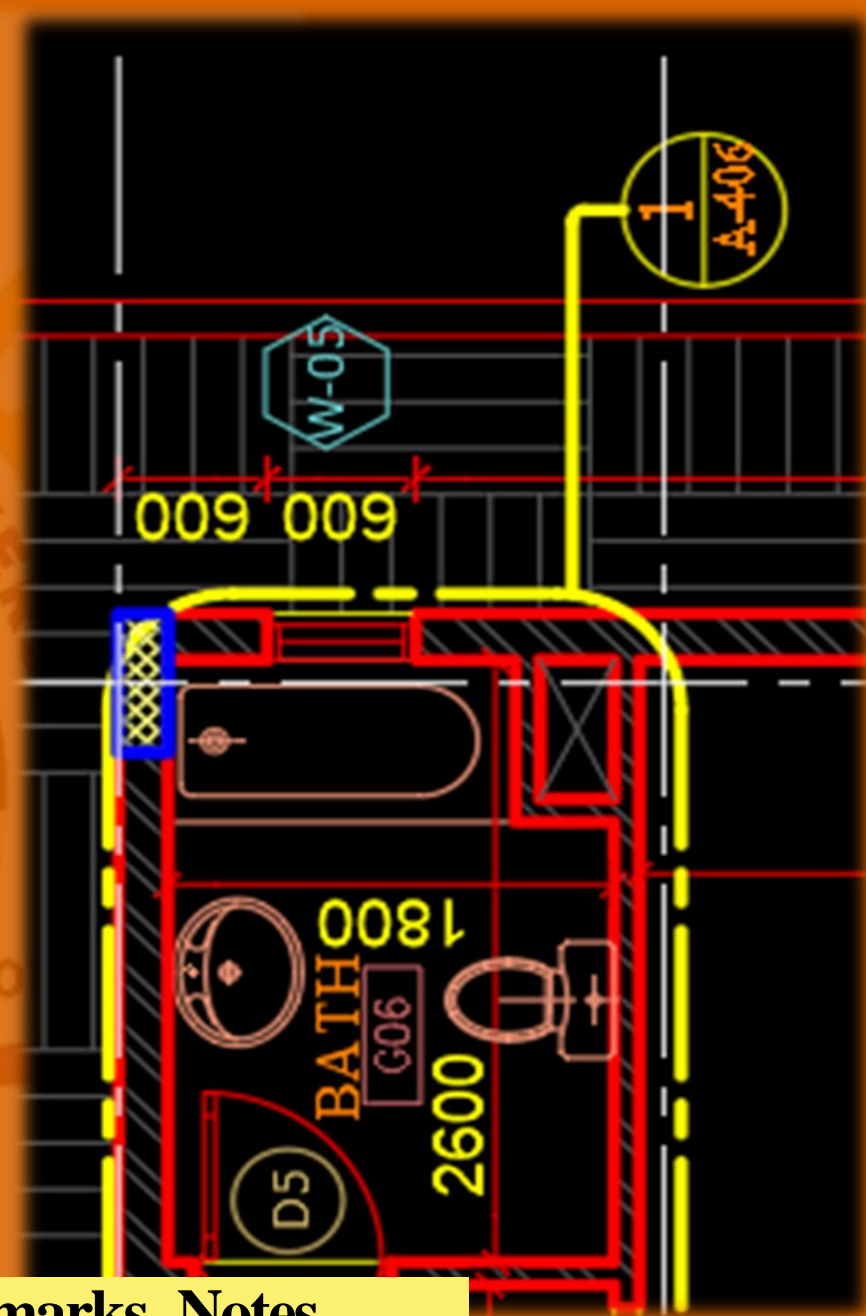
7-Tags (Windows ,Doors , Details ,....)



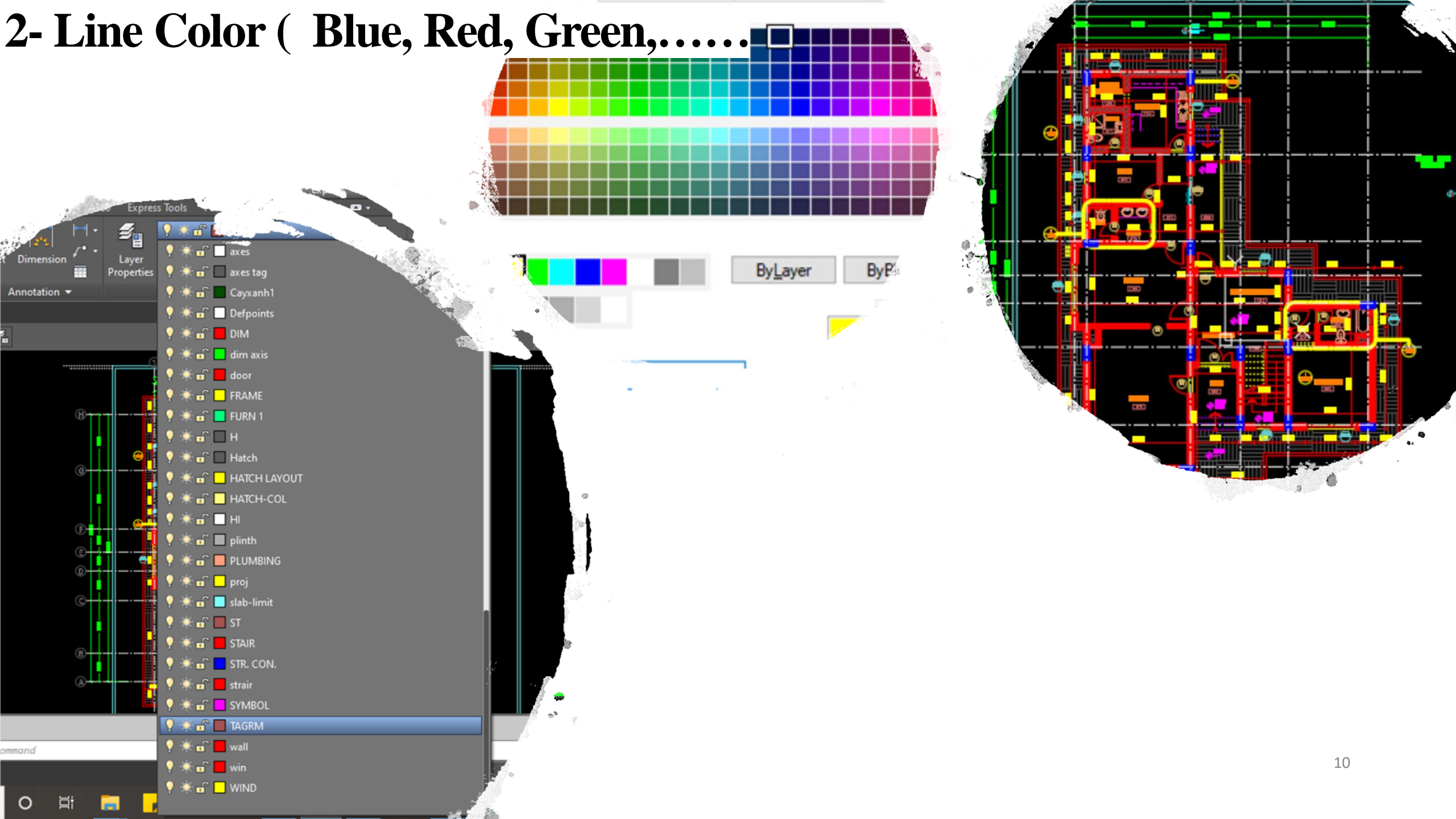
8-Levels

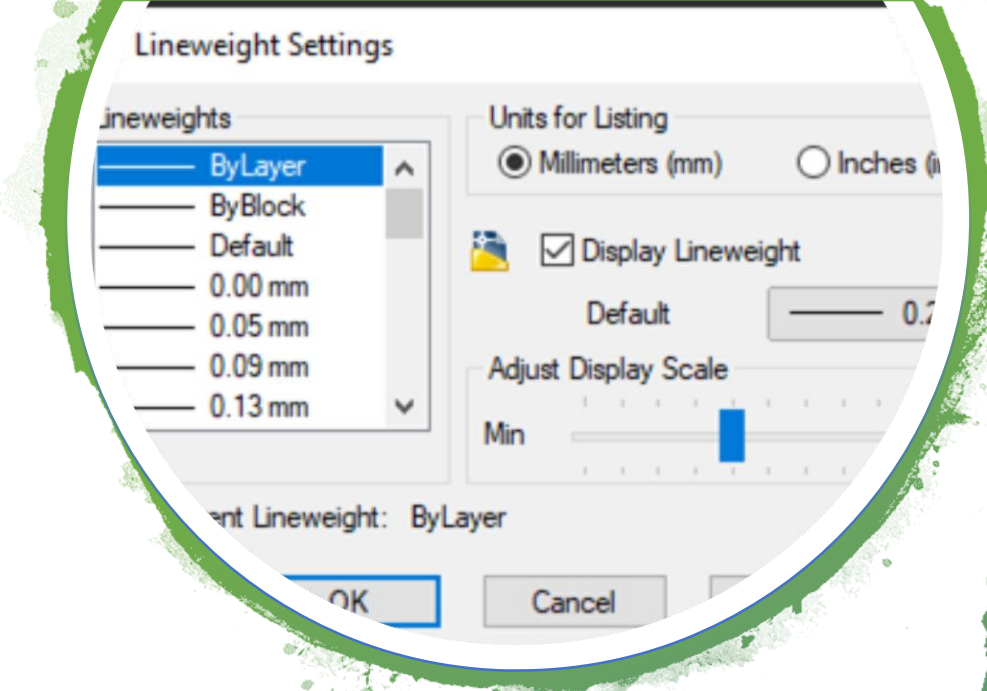


9- Texts (Space Names , Directions , Remarks, Notes

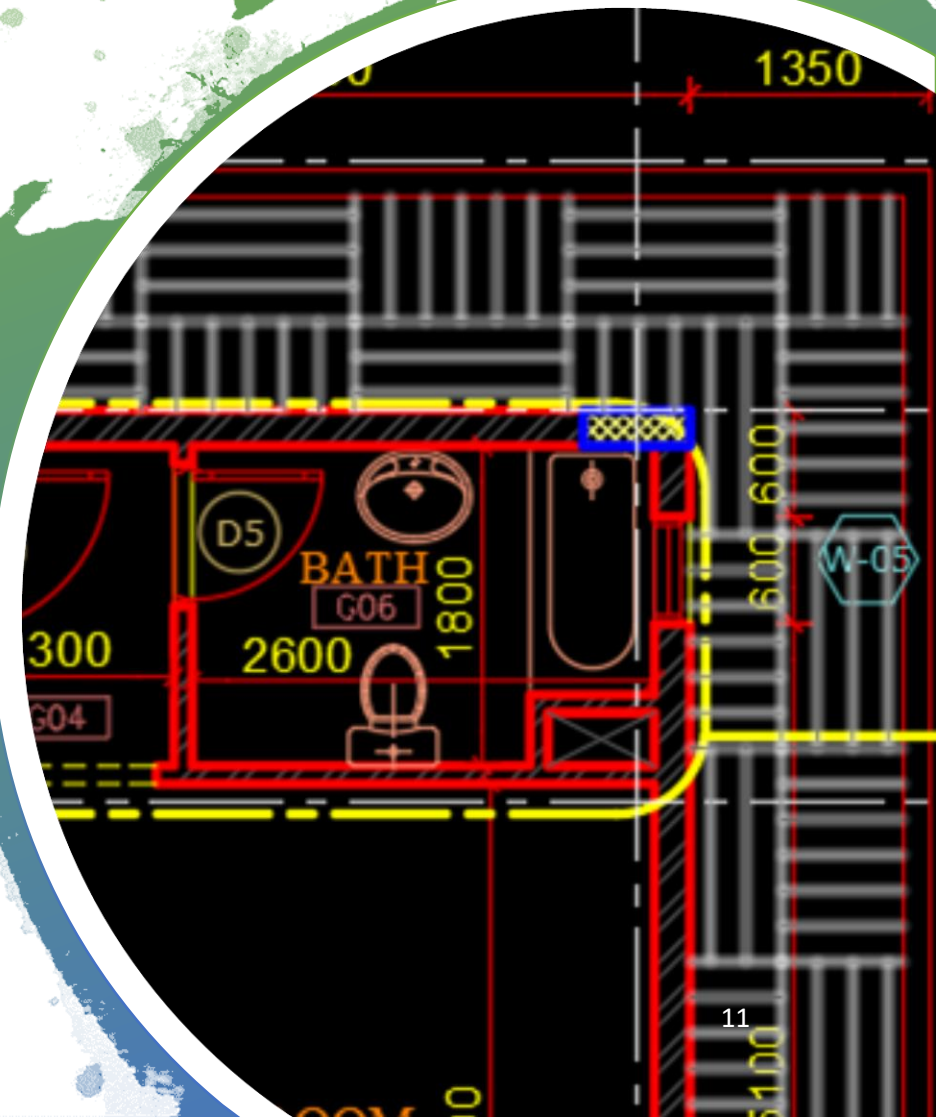


2- Line Color (Blue, Red, Green,.....)





3- Line Weight 0.00,0.05, 0.09.....



The background features a large, faint watermark of the Tishk International University logo. The logo is circular with a sunburst border. Inside the circle, the text "TISHK INTERNATIONAL UNIVERSITY" is written along the top arc, and "TIU" is written in large, bold letters in the center. Below the circle, the text "SULAIMANI" is on the left and "2014" is on the right. At the bottom of the logo is a stylized fountain pen nib. The entire background is a solid orange color.

Thank you